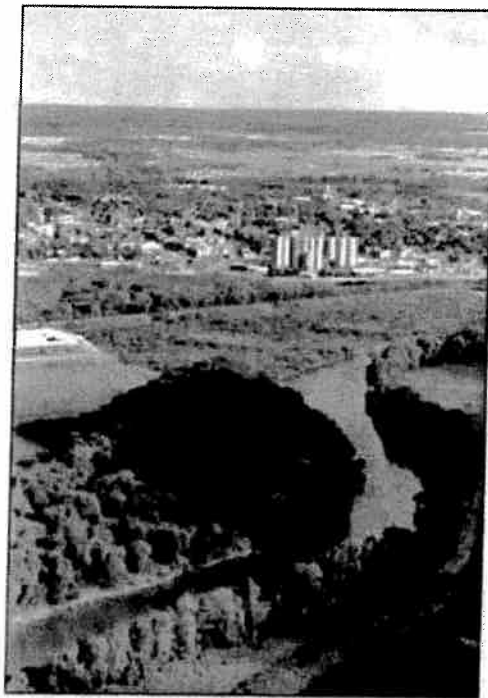


# **City of Circleville, OH**

## **Storm Water Management Plan**



**March 2007**



Prepared by:

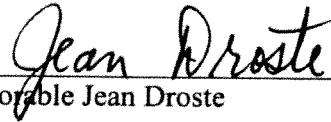


**BURGESS & NIPLE**

# City of Circleville, Ohio

## Certification

"I certify under penalty of law that this document and all attachments were prepared under my direction or supervision in accordance with a system designed to assure that qualified personnel properly gathered and evaluated the information submitted. Based on my inquiry of the person or persons who manage the system, or those persons directly responsible for gathering the information, information submitted is, to the best of my knowledge, true, accurate, and complete. I am aware that there are significant penalties for submitting false information, including the possibility of fine and imprisonment for knowing violations."



---

The Honorable Jean Droste  
Mayor  
City of Circleville, Ohio

---

# Contents

	<i>PAGE</i>
I Executive Summary	1
II Legal Authority	1
III Fiscal Resources	1
IV Permit Coverage Area	1
V Existing Storm Water System	1
VI Existing Condition of Receiving Streams	2
VII Reporting Requirements	2
VIII SWMP Development and Approval	2
IX Storm Water Management Program	2
1. Public Education and Outreach	4
2. Public Participation and Involvement	8
3. Illicit Discharge Detection and Elimination	10
4. Construction Site Runoff Control	14
5. Post-Construction Runoff Control	17
6. Pollution Prevention/Good Housekeeping	20
City of Circleville Location/Drainage Map	25

## APPENDICES

- Appendix A: Existing Sewer and Storm Water  
Related Regulations
- Appendix B: Ohio EPA 205b Stream Assessments  
For Scioto River (HUC 11)
- Appendix C: Storm Water Management Plan  
Schedule
- Appendix D: Complaint Form

## ***I. Executive Summary***

The City of Circleville (City) is required to submit a Storm Water Management Plan (SWMP) in accordance with 40 CFR Part 122 and Section 6111 of the Ohio Revised Code. The document outlines the City's program to develop, implement and enforce a storm water management program designed to reduce the discharge of pollutants to the maximum extent practicable, to protect water quality, and to satisfy the appropriate requirements of the Clean Water Act (CWA) in accordance with the Ohio Environmental Protection Agency (Ohio EPA's) Phase II program. The SWMP addresses the six minimum control measures as required by state regulations. The plan also identifies the City's legal authority and fiscal resources to implement the general permit.

## ***II. Legal Authority***

Section 925.07 of the City's Codified Ordinances (see *Appendix A*) provides for control of the quality of separate storm water discharged to the City's storm sewer system. The City has the legal authority to fully implement the SWMP.

## ***III. Fiscal Resources***

Circleville currently uses monies from the City's General and Capital Fund to pay for the operation and maintenance of the storm water system and to perform capital improvements. An estimated \$100,000 is used annually for these utility related expenses. The City has limited financial resources to develop, implement, and enforce the six minimum control measures. A storm water fee or storm water utility will be considered in the future to help pay for program/staffing needs.

It is anticipated that existing staff will only be able to perform some of the additional duties needed to fulfill the programs listed in this SWMP. Additional staff will need to be hired to comply with permit requirements and/or coordinate a storm water fee or storm water utility program.

## ***IV. Permit Coverage Area***

Circleville is located in Pickaway County and is included in two subwatershed areas: HUC11-05060001230 - Scioto River (downstream Big Darby Creek to Upstream Kinnikinnick Creek) and HUC11-05060002010 - Scioto River (downstream Olentangy River to upstream Big Darby Creek). The City has an area of 6.6 square miles and a population of 13,485 residents (based on 2000 Census data). The SWMP will traverse all areas within the city limits.

## ***V. Existing Storm Water System***

The City's storm water drainage system is comprised of approximately 35 miles of storm sewers, 935 catch basins, 477 manholes, 4 drainage ponds and 50 storm water outfalls discharging to the waters of the states.

## ***VI. Existing Condition of Receiving Streams***

Storm water discharge and overland drainage from the City flow to Hargus Creek, Hominy Creek and McHenry Ditch, all of which are tributary to the Scioto River (see *Location/Drainage Map*). The water quality issues identified in Ohio EPA's 2004 *Integrated Water Quality Monitoring and Assessment Report* for the Scioto River (see *Appendix B*) include unknown toxicity, priority organics, metals, unionized ammonia, siltation, organic enrichment/DO, flow alteration, and other habitat alterations. Since these items have a high magnitude of causing water quality problems, BMPs for the six minimum control measures selected by the City will address these pollutants where possible.

## ***VII. Reporting Requirements***

The City will submit its required report annually during the first term of the permit cycle. The report will include the status of compliance with the permit conditions, an assessment of the appropriateness of the Best Management Practices (BMPs), progress towards achieving the measurable goals for each of the six minimum control measures, a summary of the activities the City will undertake during the reporting cycle, any changes to BMPs or measurable goals, and all relevant data (monitoring) obtained during the reporting period.

## ***VIII. SWMP Development and Approval***

The City retained the services of Burgess & Niple, Inc. to assist them in its preparation of the Notice of Intent (NOI) and SWMP. The project team, which included representatives from the City's Public Service Departments and other affected departments, developed the program documents during the summer/fall of 2005. The City reviewed the Storm Water Phase II Overview at the January 23, 2007 Service Committee Meeting. The City reviewed six minimum control components of the draft SWMP with City Council at a Council work session on February 27, 2007. The draft SWMP was presented to the public at the City Council Meeting held on March 6th, 2007. The draft SWMP was available for public review and comment from March 7th, 2007 through April 2nd, 2007. The final SWMP was finalized and approved on April 3, 2007, by Ordinance number 04-15-2007.

## ***IX. Storm Water Management Program***

When reviewing the areas of greatest need, it has been determined that public education, municipal pollution prevention practices, and construction/post-construction plan review are the areas which the City would like to emphasize and receive initial attention through program assessment and development. Accordingly, the schedule will reflect assessment, development and implementation of improvement for these areas in the early years of the permit.

The SWMP outlines the six minimum control measures that are expected to result in reductions in pollutants discharged by the City.

The six minimum controls are:

1. Public Education and Outreach
2. Public Participation and Involvement
3. Illicit Discharge Detection and Elimination
4. Construction Site Runoff Control
5. Post-Construction Runoff Control
6. Pollution Prevention/Good Housekeeping

For each of the six minimum control measures, a written description of the existing and proposed practices and rationale for how and why the BMPs were chosen is provided. A table follows the text for each control measure and includes a list of BMPs, a description of each BMP, timeline for implementation, measurable goals and responsible party. The specific permit line item satisfied by the BMP is listed in parenthesis after each BMP. Service providers that may be used for assistance with the SWMP are listed in parenthesis after the responsible party.

BMPs for the first year of the permit include the target month and year of implementation. All other BMPs only include the year of implementation. Detailed dates including month and year will be provided in the Annual Report for each BMP to be implemented in the following year. The proposed schedule of BMP implementation is included as *Appendix C*.

Proposed BMPs for each minimum control measure are addressed on the following pages.

## 1. PUBLIC EDUCATION AND OUTREACH

The Public Education and Outreach control measure will target homeowners, restaurateurs, industry and the general public. An informed and knowledgeable community is crucial to the success of the storm water management program. As the public becomes aware of the personal responsibilities expected of them and others in the community, including the individual actions they can take to protect or improve the quality of area waters, a greater compliance with the storm water program will result.

### *Strategies*

The City will educate the general public through the distribution of educational brochures, informational articles in *The Herald*, and use of a storm water webpage that will be linked to the City's website. A repository of educational materials on storm water related issues will be maintained by the City's Public Service Department.

The public education program will use a variety of strategies to reach a diverse audience:

- Storm water related news/articles will be made available on a storm water webpage linked to the City's website.
- Storm water related information will be distributed to all Circleville residents by their inclusion as articles in *The Herald* and as flyer/brochures in utility bills.
- The education program will target elementary schools in an effort to generate interest in the City's youth. It will also target businesses and industries such as restaurants and garages that may significantly impact storm drains through grease and oil releases.
- A mass media campaign such as use of radio or local television station CGTV-5 will generate a positive storm water management message to a local audience.

The school education program will target school age children in the Circleville school district from grades K-12. Volunteer educators such as staff from Pickaway Soil and Water Conservation District (SWCD), Pickaway County Health Department and other related organizations will conduct programs on topics such as surface water pollution, water quality, storm water management, and water conservation. Programs and activities will be coordinated by the City.

An adult education program will be developed to target homeowners about proper septic system maintenance, proper disposal of used motor oil, chemicals pesticides and household products. It will also target business/industry on the proper maintenance/cleaning of oil/grease traps, minimization of chemical usage, disposal of hazardous waste products and other storm water management related activities.

*Table 1* identifies the BMPs, schedule, measurable goals and responsible party(s) for the Public Education and Outreach minimum control measure.

**TABLE 1 – PUBLIC EDUCATION AND OUTREACH BMPs**

<b>Best Management Practice</b>	<b>Year</b>	<b>BMP Description</b>	<b>Measurable Goals</b>	<b>Responsibility</b>
Public Outreach (3.2.1.2.1, 3.2.1.2.2, 3.2.1.2.5)	Jan. 2007 to Dec. 2007	Establish storm water webpage linked through the City's website.	Document development of storm water webpage.	Public Service
	2008 to 2011	Publish storm water related articles and calendar of storm water related events on City website.	Document articles used and date of publication.	Public Service
Education Programs (3.2.1.2.1, 3.2.1.2.2, 3.2.1.2.3, 3.2.1.2.4, 3.2.1.2.5)	Jan. 2007 to Dec. 2007	Assess the needs of a City storm water education program. Identify/develop program elements and identify potential speakers.	Identify public education programs reviewed, those selected, and potential speakers contacted.	Public Service
	2008 to 2011	Conduct education program	Document educational materials and/or programs developed, date of programs, speakers used, and those in attendance.	Public Service
	2008	Develop program to provide environmental/storm water related education for local schools.	Document program developed and responsibilities of each organization involved.	Public Service (Pickaway SWCD, others)
	2009 to 2011	Partner with organizations to provide environmental/storm water related education to local schools.	Document the date, location, number of individuals, and the topic of the program.	Public Service (others)
	2008	Help coordinate program to provide environmental/storm water related training and workshops for local businesses/industries.	Document program developed, target audience and responsibilities of each organization involved.	Public Service (Pickaway SWCD, others)

Best Management Practice	Year	BMP Description	Measurable Goals	Responsibility
Education Programs (cont.)	2009 to 2011	Partner with organizations to provide environmental/storm water related training and workshops for local businesses/industries.	Document the date, location, number of individuals participating, and the topic of the program.	Public Service (others)
	2008	Develop construction related handout for contractors/developers.	Document the handout developed and information included.	Public Service
	2009 to 2011	Provide construction related handout to contractors/developers.	Document the number of handouts given to contractors/developers.	Public Service
	Jul. 2007 to Dec. 2007	Create educational displays or exhibits for community events	Document displays and exhibits developed.	Public Service
Media (3.2.1.2.1, 3.2.1.2.2, 3.2.1.2.5)	Jan. 2007 to Dec. 2007	Identify/develop educational flyers and/or storm water related articles for print media.	Document flyers and/or articles identified/developed.	Public Service (U.S.EPA, Pickaway SWCD, others)
	2008 to 2011	Include flyers/articles with utility bills.	Record number of copies of materials used, media source, and dates of publication.	Public Service
	2008 to 2011	Publish storm water related articles in the local community newspaper The Herald.	Record number of copies of materials used, media source, and dates of publication.	Public Service

Best Management Practice	Year	BMP Description	Measurable Goals	Responsibility
Media (cont.)	2008	Create storm water related radio ads/television program for the local TV station CGTV-5.	Document radio ads/television program developed.	Public Service/ CGTV-5
	2009 to 2011	Air storm water related radio ads and television program	Record media sources used and dates of programs.	Public Service

## 2. PUBLIC PARTICIPATION AND INVOLVEMENT

The City's public participation program will have a large public involvement component because support by the citizenry is crucial to the success of the SWMP. Broader public support in the development and decision making process will minimize potential legal challenges and avoid confusion over City storm water policies. The City will ensure that the public participation program will involve all socio-economic groups and all storm water meetings/events will be open to the public.

### *Strategies*

Public meetings will provide an opportunity to discuss various viewpoints and provide input concerning appropriate storm water management policies and BMPs. These meetings will be publicized in the Herald and on the City's website.

The City has a current cleanup program for Hargus Creek that is conducted every summer before the Corps of Engineers annual inspection of the creek. Although it would seem like a good opportunity to involve the community in the cleanup program, the high banks and dense vegetative cover make stream cleanup for the general public too difficult and a potential safety issue. In addition, most of the "cleanup" work is actually bank repair, tree removal, etc. that requires specialized machinery and is best left for municipal crews to address. Clean up programs for water ways like McHenry Ditch may be possible in some areas.

PPG sponsors an annual household hazardous waste drop off program for all Pickaway County residents. The City will work with PPG and the County to increase public awareness of this program. This could include a posting on the City's storm water webpage or a utility bill insert. The City will explore whether there are other opportunities for special cleanup events like the HHW drop off program and help schedule, coordinate and promote these programs.

The City will partner with local organizations such as the Pickaway SWCD, Pickaway County Health Department, etc. to provide training and educational workshops. Topics may include the benefits of permeable pavement, riparian setback requirements, green building design for the construction community, urban watershed planning, open space design, etc. The City already has a program in place that addresses stream setbacks and floodplain issues. The current subdivision ordinance calls for a 50-foot riparian setback and the recent Cromwell Glen project included a set aside of several non-developable acres in the floodplain.

The City's existing complaint program will be reviewed and updated to be consistent with the requirements of the Phase II regulations. The existing method for making storm water related complaints is to call the Service Department at (740) 477-8224 or to fill out and submit a complaint form. This complaint form (see *Appendix D*) can be obtained from the City's website: <http://www.ci.circleville.oh.us/Files/Complaint.pdf>. Although the program will be reviewed, the need for a special storm water hotline does not seem warranted at this time. All after hour complaint calls go to 911.

*Table 2* identifies the BMPs, schedule, measurable goals and responsible party(s) for the Public Participation/Involvement minimum control measure.

TABLE 2 – PUBLIC INVOLVEMENT/PARTICIPATION BMPs

Best Management Practice	Year	BMP Description	Measurable Goals	Responsibility
Public notices (3.2.2.2.3)	Jan. 2007 to 2011	Public notice upcoming meetings and events in print media.	Document publication dates.	Public Service
Public complaint/response (3.2.2.2.2)	Jan. 2007 to Jun. 2007	Review and update storm water response/complaint program, if necessary	Additions/modifications made to storm water response/complaint program.	Public Service
	Jul. 2007 to 2011	Conduct storm water response/complaint program.	Document the number of written complaints and calls received on the storm water response line. Document the number of problems/incidents resolved.	Public Service
Community activities (3.2.2.2.3, 3.2.2.2.4)	2008	Develop program to provide environmental and storm water related activities such as training/workshops for the public.	Document program developed, target audience and responsibilities of each organization involved.	Public Service (Pickaway SWCD, others)
	2009 to 2011	Partner with organizations to conduct environmental and storm water related activities such as training/workshops.	Document the date, location, number of individuals participating, and the topic of the program.	Public Service (Pickaway SWCD, others)
	2009 to 2011	Implement intern program for community youths to work at the Public Service Office, Transportation Garage, etc.	Document the individuals participating in the program.	Public Service

### 3. ILLICIT DISCHARGE DETECTION AND ELIMINATION

The illicit discharge detection control measure will involve both municipal staff and local citizens and agencies. The program will work to detect and eliminate illicit discharges.

#### *Strategies*

The City has a paper set of drawings of their storm sewer system and an older digitized set of sanitary and water distribution system. Both the Public Service and Utilities Department is interested in developing a modern Geographic Information System (GIS) for the storm sewer, sanitary sewer, and water distribution system. Storm water related information such as citizen complaints, dry weather screening, and monitoring data would be entered into the system. A Global Positioning System (GPS) would be used to locate all storm water outfalls, catch basins, manholes, culverts, etc. Pickaway County has received a grant for development of a GIS program, so the City may team with the County on its development or wait until the County's GIS program is underway before pursuing their desired mapping improvements.\*

Circleville has a limited number of septic systems located within the city limits. The City will work with the Pickaway County Health Department to develop a list of home sewage treatment systems (HSTS's) within the community. The location of these HSTS's will be added to the existing storm sewer maps and future GIS related maps. The City has been aggressively eliminating septic systems in its jurisdiction. Recent projects include Long Alley, Dearborn, Northwood Park (Circleville Township) and North Court Street (Child's Place Extension).

The City will develop a regular storm water outfall screening program. A right-of-entry ordinance will be developed to allow municipal employees access onto private property. This ordinance will aid in inspecting private outfalls and for sampling data, if desired. Field testing of dry weather discharges will be conducted as needed. Once illicit discharges are located, preventative measures will be taken through the Pollution Prevention/Good Housekeeping program.

The City will create an illicit discharge detection program. An ordinance will be developed prohibiting illicit discharge connections to the storm drainage system. It is anticipated that TV inspection, smoke testing, and dye testing are methods that may be used to identify suspect piping. Enforcement actions that will be taken against properties found to be in non-compliance or that refuse to allow access to their facilities will be determined. They may range from cease and desist orders and suspension of water or sewer service to criminal and civil penalties, including charging the owner of the property for the cost of abatement.

The Service Department will request that facilities with NPDES permits in the area submit their sampling and monitoring results. In the future, this data will be included in the proposed GIS system for reference. If future sampling results show elevated levels of

a particular pollutant then the City can focus its investigation on suspect industries to determine the source of the illicit discharge.

Education of the public regarding hazards associated with illicit discharges will be handled through informational brochures as described in the Public Education and Outreach section. Citizens will be encouraged to report illegal dumping of materials into the storm sewer system via the Public Utilities Department's phone number or by filling out a complaint form (see Public Participation/ Involvement section). Use of the PPG sponsored Household Hazardous Waste drop off program will also be encouraged.

*Table 3* identifies the BMPs, schedule, measurable goals and responsible party(s) for the Illicit Discharge Detection and Elimination minimum control measure.

TABLE 3 – ILLICIT DISCHARGE DETECTION AND ELIMINATION BMPs

Best Management Practice	Year	BMP Description	Measurable Goals	Responsibility
Storm sewer map (3.2.3.1.2, 3.2.3.2.1)	2010 to 2011	Develop City-wide GIS storm sewer map. Use GPS to locate all storm water system components.	Record percentage of mapping/data collection tasks completed.	Public Service
Home Sewage Treatment Systems (HSTSs) (3.2.3.1.2)	2009 to 2011	Develop list of HSTSs by address and add locations to storm sewer map(s).	Record percentage of HSTS list developed and mapping task completed.	Public Service (Public Utilities & Pickaway County Health Department)
Ordinances (3.2.3.1.3, 3.2.3.2.2, 3.2.3.2.3)	Jul. 2007 to Dec. 2007	Develop illicit discharge connection ordinance and right-of-entry ordinance.	Document ordinances developed.	Public Service
	2008	Enact illicit discharge connection ordinance and right-of-entry ordinance.	Document number of illegal connections identified and actions taken.	Public Service
HHW Recycling (3.2.3.2.4, 3.2.3.2.5)	Jan. 2007 to 2011	Promote household hazardous waste (HHW) recycling.	Document number of brochures passed out to public or advertisements used for promoting program.	Public Service (PPG Industries)
Illicit discharge detection elimination (IDDE) program (3.2.3.1.1, 3.2.3.1.4, 3.2.3.1.5, 3.2.3.1.6, 3.2.3.1.7, 3.2.3.2.4)	2009	Develop detailed IDDE program. Program will include outfall screening, storm sewer TV inspection, smoke/dye testing, and education of employees and public.	Submit details on annual IDDE program activities and.	Public Service (Pickaway County Health Department)

Best Management Practice	Year	BMP Description	Measurable Goals	Responsibility
Illicit discharge detection program (cont.)	2010 to 2011	Perform dry weather screening of outfalls, field testing, dye testing, and failing septic system identification requirements.	Document the number of dry weather outfall screenings conducted.	Public Service <i>(Public Utilities)</i>
Public complaint/response <i>(3.2.3.2.4, 3.2.3.2.5)</i>	Jan. 2007 to Jun. 2007	Review and update existing citizen complaint recording procedure.	Document the changes made to the existing complaint recording procedure.	Public Service
	Jul. 2007 to 2011	Record citizen complaints on illicit connections or illegal dumping.	Document the number of citizen complaints and the results of actions taken.	Public Service

#### 4. CONSTRUCTION SITE RUNOFF CONTROL

The City recognizes that construction site runoff can transport a significant amount of silt and sediment in a short period of time. The City already has several means of addressing storm water runoff from construction sites in place.

The City's *Subdivision Regulations* manual addresses erosion and sedimentation control (Section 7.04) and surface runoff and storm drainage (Section 7.05). Copies of these storm water related regulations are included in *Appendix A*. The City currently follows the City of Columbus' *Storm Drainage Manual* (March, 2006) and Circleville's *Resource Development Guide* for design and construction specifications for storm water management facilities. Although Storm Water Pollution Prevention Plans are not referenced within the *Subdivision Regulations*, detailed erosion and sedimentation plans and drainage data are required for large developments. These documents serve to control the pollution of public waters by sediment and erosion from construction activities, and must be approved by the Director of Public Service before any final plans are approved. It is important to note that design specifications are periodically updated by the Director of Public Service.

##### *Strategies*

The City will review its *Subdivision Regulations* and make revisions as necessary. It is anticipated that more detailed language on penalties/fines for storm water violations will be adopted. Sites may be inspected for compliance and if found lacking, an inspector may issue a permit violation, stop work order, fine or other measure to ensure compliance.

Current City construction site inspection and plan review procedures will be reviewed. Updates will be made, if necessary. Training programs for proper construction site management will be developed for City inspectors.

The development and disbursement of education materials to contractors and developers will be coordinated as part of the Public Education program. The information included in the education materials would include the City's plan review policy, review fees and penalties, coordination with Ohio EPA's NPDES General Construction permit, and any other data deemed necessary by the City.

The City's existing complaint program will be updated for receiving, recording and responding to complaints about construction site runoff from the public (via the Public Service Department phone number and/or complaint form).

*Table 4* identifies the BMPs, schedule, measurable goals and responsible party(s) for the Construction Site Runoff Control minimum control measure.

**TABLE 4 – CONSTRUCTION SITE RUNOFF CONTROL BMPs**

<b>Best Management Practice</b>	<b>Year</b>	<b>BMP Description</b>	<b>Measurable Goals</b>	<b>Responsibility</b>
Regulations/Enforcement (3.2.4.1.1, 3.2.4.1.2, 3.2.4.1.3, 3.2.4.2.1, 3.2.4.2.2, 3.2.4.2.3)	Jan. 2007 to Dec. 2007	Review/revise existing <i>Subdivision Regulations</i> to ensure compliance with Phase II regulations including revision to enforcement procedures and penalties.	Document changes made to <i>Subdivision Regulations</i> .	
	2008 to 2011	Enforce updated procedures and penalties.	Document the number of enforcement actions taken. Document the number of stop work orders given.	Public Service
Site inspection (3.2.4.1.6, 3.2.4.2.6)	Jan. 2007 to Dec. 2007	Review existing City construction site inspection procedures. Adopt Ohio EPA Construction Storm Water permit as local permit. Revise/implement new procedures, if warranted.	Document revisions made to site inspection procedures.	Public Service ( <i>Public Utilities</i> )
	2008 to 2011	Used revised procedures to conduct inspection of construction sites.	Record number of site inspections performed and problems identified.	Public Service
Site plan review (3.2.4.1.4, 3.2.4.2.4)	Jan. 2007 to Dec. 2007	Review City site plan review process. Revise or implement new procedures, if warranted.	Document revisions made to site plan review process, if warranted.	Public Service ( <i>Public Utilities</i> )
	2008 to 2011	Used revised procedures to conduct review of site plans.	Document the number of total site plans and inadequate site plans reviewed.	Public Service

Best Management Practice	Year	BMP Description	Measurable Goals	Responsibility
Training (3.2.4.1.2, 3.2.4.1.3)	2008	Develop construction site training program. Develop list of potential instructors and participants.	Document list of instructors/ participants considered.	Public Service (Public Utilities)
	2009 to 2011	Conduct construction site training program.	Document date of program and participants.	Public Service (Public Utilities)
Public complaint/response (3.2.4.1.5, 3.2.4.2.5)	Jan. 2007 to Jun. 2007	Review and update procedures for receiving input from public on construction site issues.	Document the number of public notifications received.	Public Service
	Jul. 2007 to 2011	Receive input from public using revised procedures.	Document the number of public notifications received.	Public Service

## 5. POST-CONSTRUCTION RUNOFF CONTROL

The City recognizes that post-construction runoff control is important in limiting the amount of silt and sediment that is discharged to local receiving streams. Unlike construction site runoff, the City does not have a formal policy that specifically addresses storm water runoff from redevelopment sites and post-construction operation and maintenance activities.

The City's *Subdivision Regulations* manual does not specifically address post-construction runoff. However, Section 7.02 promotes preservation of natural features and minimization of negative impacts, Section 7.03 addresses development in flood zones or areas with poor drainage, Section 7.05 addresses drainage design requirements and Section 7.11 mandates minimum open space requirements (see *Appendix A*). The City currently follows the City of Columbus' *Storm Drainage Manual (March 2006)* for storm water management facilities. This guide does include information on post-construction runoff control. As is the case with all construction projects, designs must be approved by the Director of Public Service before any final plans are approved.

### *Strategies*

The City will review current ordinances and local design standards and make revisions as necessary. It is anticipated that a penalty or fine will be incorporated into current ordinances to cover individuals that do not follow storm water regulations. Redevelopment sites may be inspected for compliance and if found lacking, an inspector may issue a permit violation, stop work order, fine or other measure to ensure compliance. The City of Columbus' *Resource Development Guide* and Circleville's *Resource Development Guide* will also be reviewed to determine if the City needs to consider additional structural and non-structural BMPs. Use of riparian setback requirements and porous pavement are a few BMPs of interest.

Training programs will be developed to educate City inspectors on proper maintenance techniques. Development of training programs and workshops on redevelopment techniques for developers and contractors will also be evaluated. Redevelopment plan review procedures will be reviewed. Updates will be made, if necessary.

*Table 5* identifies the BMPs, schedule, measurable goals and responsible party(s) for the Post-Construction Runoff Control minimum control measure.

TABLE 5 – POST-CONSTRUCTION RUNOFF CONTROL BMPs

Best Management Practice	Year	BMP Description	Measurable Goals	Responsibility
Regulations/Enforcement (3.2.5.1.1, 3.2.5.1.3, 3.2.5.2.5)	Jan. 2007 to Dec. 2007	Review/revise existing <i>Subdivision Regulations</i> to ensure compliance with Phase II regulations including enforcement procedures and penalties.	Document revisions/additions considered for <i>Subdivision Regulations</i> .	Public Service
	2008 to 2011	Enforce updated procedures and penalties.	Document the number of enforcement actions taken. Document the number of stop work orders given.	Public Service
Storm water management (3.2.5.1.2, 3.2.5.1.3, 3.2.5.1.4, 3.2.5.2.1, 3.2.5.2.2, 3.2.5.2.3, 3.2.5.2.4, 3.2.5.2.5)	Jan. 2007 to Jun. 2007	Review existing regulations and the City of Columbus' <i>Storm Drainage Manual (May 1991)</i> and <i>Resource Development Guide</i> to determine if additional structural/non-structural BMPs need to be addressed.	Document revisions/additions considered.	Public Service
	Jul. 2007 to Dec. 2007	Revise storm water management related regulations/policies, if warranted.	Document revisions/additions made.	Public Service
	2008 to 2011	Inventory changes made to natural resources	Document the reduction of impervious surfaces associated with new/redevelopment projects, reduction of impervious cover, number of stream miles modified, acreage preserved as buffers, etc.	Public Service

Best Management Practice	Year	BMP Description	Measurable Goals	Responsibility
Site plan review (3.2.5.2.1, 3.2.5.2.2)	Jan. 2007 to Dec. 2007	Review redevelopment plan review process. Revise or implement new procedures, if required.	Document revisions made to the redevelopment plan review process.	Public Service ( <i>Public Utilities</i> )
Education (3.2.5.2.3, 3.2.5.2.6)	2008 to 2011	Use revised procedures to conduct review of redevelopment plans.	Document the number of inadequate redevelopment plans reviewed.	Public Service ( <i>Public Utilities</i> )
Education (3.2.5.2.3, 3.2.5.2.6)	2009	Develop BMP/redevelopment education program for contractors and developers.	Document potential instructors, contractors, and developers considered for participation.	Public Service
Education (3.2.5.2.3, 3.2.5.2.6)	2010 to 2011	Coordinate education programs on proper design and use of BMPs for redevelopment projects to developers and contractors.	Document the date of education program, content, and participants involved.	Public Service

## 6. POLLUTION PREVENTION/GOOD HOUSEKEEPING

The pollution prevention/good housekeeping control measure will be addressed by municipal staff. The program will be developed to ensure that pollution from municipal sources is minimized and that City employees are properly trained in the operation and maintenance of the storm water system and City-owned facilities.

The City has five primary municipal facilities that may be affected by the Phase II regulations (see *Location/Drainage Map*): the water treatment plant, wastewater treatment plant, police/fire station, transportation (Public Service) yard and water/sewer (Public Utilities) yard. An operational Oil/grease separator is present at the Transportation (Public Service) site. Maintenance work on vehicles from these facilities is generally performed off-site with exception of the transportation (Public Service) yard.

Salt is stored in a covered facility at the transportation yard. No storm water containment is present at this site. The City has six plows and four salt trucks. The salt trucks are equipped with manual spreaders. Main thoroughfares, schools, stop lights, and other critical areas are plowed/salted for each storm event. Residential streets are only plowed/salted during severe events.

The City has two street sweepers (one mechanical brush, one vacuum) that it uses to clean city streets. The downtown area is swept twice per week. Residential streets are done periodically during the year. Each residential street is cleaned at least once per year. Parking regulations have been established that limit parking to certain sides of downtown streets each day to allow for thorough street sweeping.

City crews spend all November and most of December collecting leaves which are taken to a privately owned compost facility. Shallow catch basins are cleaned out on an as-needed basis using the City's vacuum sweeper truck. City crews regularly visit storm sewer system hot spots and are quick to address problems in these areas. Waste materials collected from street sweeping operations, catch basin cleaning, and other municipal operations are temporarily stored at the transportation yard before final disposal.

There is no formal training for municipal personnel on the proper maintenance of the storm sewer system.

The only existing City-owned facility with an NPDES permit is the Circleville Wastewater Treatment Plant. Its NPDES Permit ID Number is OH0024465.

### *Strategies*

The current vehicle maintenance program will be reviewed. At minimum, all city-owned vehicles will be regularly inspected to eliminate oil, grease, and fluid leaks. A list of vehicle status will be posted at each maintenance facility. City-owned maintenance facilities will be inspected in the future for potential cross-connections and containment issues.

The City's current street sweeping program will be evaluated for possible improvements. Better record keeping of the amount of material collected, water used from hydrants, and the benefit of increased street sweeping of high traffic areas will be considered.

Training on the proper maintenance of the storm sewer system will be required. Included will be training on the proper storage and disposal of storm system related waste. Temporary waste storage locations will be reviewed to ensure that runoff from these sites does not impact natural water courses. Troubled storm water system facilities such as catch basins and outfalls will continue to be visited on a regular basis.

Procedures will be evaluated to ensure that new flood management projects are assessed for water quality impacts and existing municipal projects are reviewed for additional water quality protection.

The Public Service Department will review their plowing/salt application program. Modifications such as use of temperature sensors and automatic spreaders may provide savings in the amount of salt applied to roadways and consequently a reduction in the amount that runs off to local waterways. In addition, the City will provide proper containment for its salt stockpile facility. This may call for major alterations to the existing building or replacement depending on a feasibility study of the options.

Fertilizer and pesticide/herbicide application programs will be reviewed. The City presently contracts out all chemical application services. An Integrated Pest Management program (IPM) that promotes alternatives to traditional chemical pesticides will be considered. The development of a lawn maintenance program for municipal employees and city residents will be considered.

**Table 6** identifies the BMPs, schedule, measurable goals and responsible party(s) for the Pollution Prevention/Good Housekeeping minimum control measure.

**TABLE 6 – POLLUTION PREVENTION/GOOD HOUSEKEEPING BMPs**

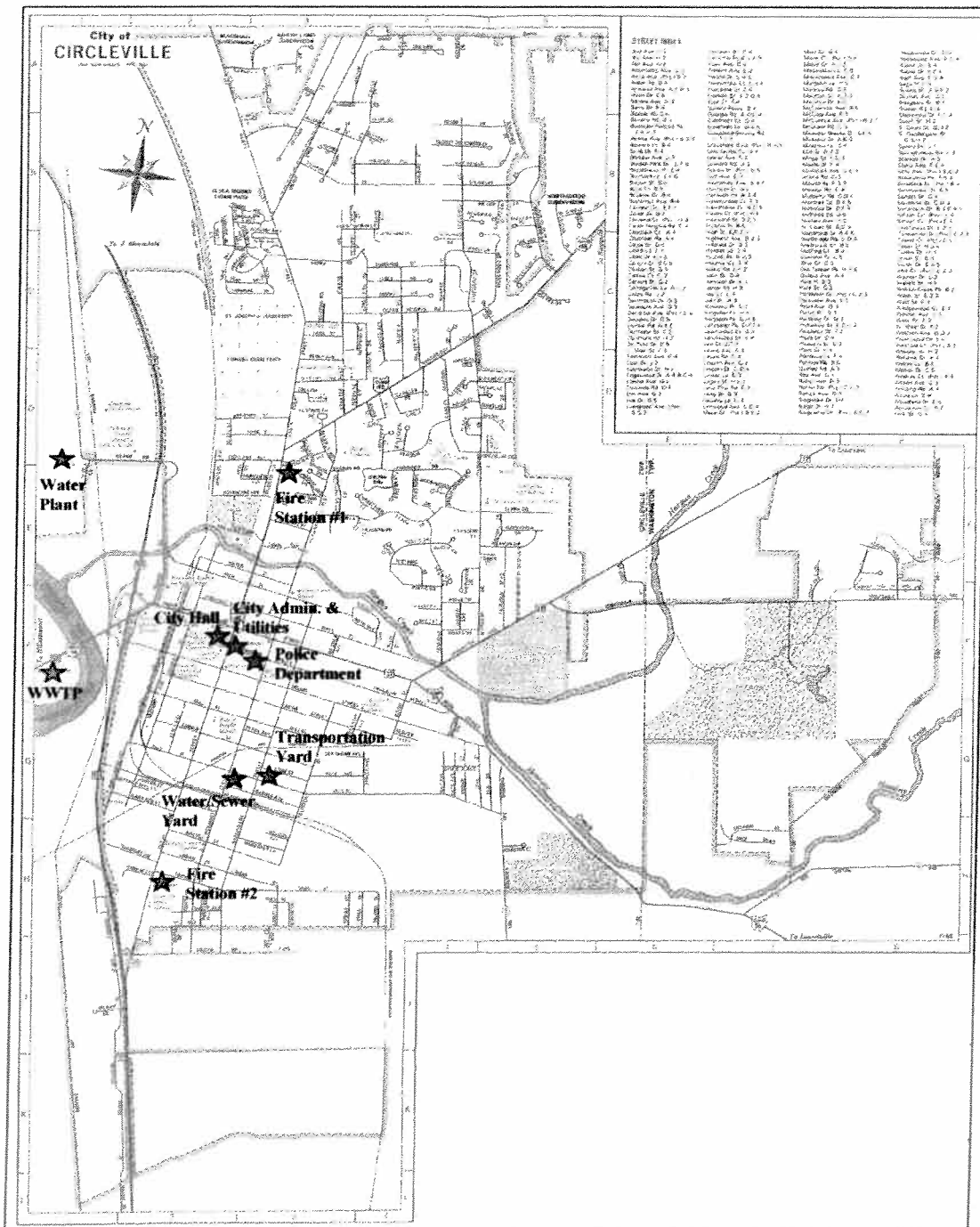
<b>Best Management Practice</b>	<b>Year</b>	<b>BMP Description</b>	<b>Measurable Goals</b>	<b>Responsibility</b>
Vehicle maintenance (3.2.6.1.1, 3.2.6.2.1, 3.2.6.2.3)	Jul. 2007 to Dec. 2007	Review current vehicle maintenance and inspection program. Make improvements as necessary. Inspect all city-owned vehicles.	Record dates of inspection, issues discovered, and dates corrected.	Public Service/Utilities/Safety
	2008 to 2011	Use revised program to inspect all city-owned vehicles on routine basis.	Record dates of inspection, issues discovered, and dates corrected.	Public Service/Utilities/Safety
Facility maintenance (3.2.6.1.1, 3.2.6.2.1, 3.2.6.2.2, 3.2.6.2.3)	Jul. 2007 to 2008	Review all maintenance facilities and temporary waste storage areas. Eliminate any cross-connections and correct any containment issues.	Record dates of inspection, issues discovered, and dates corrected.	Public Safety/Utilities
Street sweeping (3.2.6.1.1, 3.2.6.2.1, 3.2.6.2.2, 3.2.6.2.3)	Jul. 2007 to Dec. 2007	Evaluate methods to improve street sweeping program. Increase street sweeping in high traffic areas.	Document existing program and improvements proposed.	Public Service
	2008 to 2011	Perform street sweeping on routine basis using revised program.	Document the miles of street cleaned, amount of trash removed and frequency of street cleaning.	Public Service
Training (3.2.6.1.1, 3.2.6.1.2, 3.2.6.2.2)	Jan. 2007 to Dec. 2007	Develop training program for proper maintenance of storm sewer system, waste disposal, vehicle maintenance, and use of chemicals.	Develop list of program items considered, and potential instructors and participants.	Public Service/Utilities/Safety

Best Management Practice	Year	BMP Description	Measurable Goals	Responsibility
Training (cont.)	2008 to 2011	Conduct training of city employees on proper municipal operation practices.	Document the date of training, program content and participants involved.	Public Service
Flood management project review (3.2.6.2.3)	2008	Develop procedures for assessing water quality impacts on flood management projects.	Develop written procedures and protocol for flood management projects	Public Service
	2009 to 2011	Conduct flood management project water quality reviews	Document the number of projects reviewed and water quality impacts	Public Service
Salt storage/application (3.2.6.1.1, 3.2.6.2.1, 3.2.6.2.2, 3.2.6.2.3)	Jan. 2007 to Dec. 2007	Review/revise road salt application and storage program.	Document changes made to the salt application procedures and storage requirements.	Public Service
	2008 to 2011	Use revised program to conduct road salt application and storage program.	Document the amount of salt applied to roadways.	Public Service
Lawn chemical application (3.2.6.1.1, 3.2.6.2.1, 3.2.6.2.3)	2008	Review/revise lawn chemical application practices.	Document the procedures that were modified. Identify potential chemical application instructors.	Public Service
	2009 to 2011	Conduct lawn chemical application practices.	Document the date of classes and participants involved.	Public Service (others)

Best Management Practice	Year	BMP Description	Measurable Goals	Responsibility
Pest management (3.2.6.1.1, 3.2.6.2.1, 3.2.6.2.3)	2009	Identify ways to improve pest management program including possible development of IPM practices.	Document changes made to the pest management program.	Public Service
	2010 to 2011	Conduct revised pest management program.	Document the amount of pesticide used and locations of use.	Public Service (Others)

# CITY OF CIRCLEVILLE, OHIO

## LOCATION/DRAINAGE MAP



**APPENDIX A**

**EXISTING SEWER AND STORM WATER RELATED REGULATIONS**

925.07 Sewer Uses Permitted

The written permission to construct a building sewer, also known as a house sewer, or to make a connection to a public sewer shall specify the permissible use of such house sewer and connection and such specifications shall be governed by the following requirements:

- (a) Sewage, including wastes from water closets, urinals, lavatories, sinks, bath tubs, showers, laundries, cellar floor drains, bars, soda fountains, cuspidors, refrigerator drips, drinking fountains, stable floor drains and other objectionable wastes shall be discharged into an approved sanitary sewer only and in no case into a storm water sewer.
- (b) Industrial waste shall not be discharged into a storm water sewer but may be discharged into a sanitary sewer if the waste is of such character as not to be detrimental to the sewer system or to the sewage disposal works. Where such waste is detrimental to the sewer system or sewage disposal works it shall be otherwise disposed of in a satisfactory manner or so improved in character as not to be detrimental to the sewer system or sewage disposal works.
- (c) Surface water, rain water from roofs, subsoil drainage, building foundation drainage, cistern overflow, clean water from condensers, wastewater from water motors and elevators and any other clean and unobjectionable wastewater shall be discharged into a storm water sewer and in no case into a sanitary sewer.
  - (1) Roofs, paved or surfaced areas, yards, courts, patios and any other surface areas shall be drained into a storm sewer, either by draining directly to a storm sewer or by draining directly or indirectly through a curb to a street which drains to a storm sewer.
  - (2) Where subsoil drains are placed under a cellar floor or basement floor, or are used to encircle either the inner or outer building footers or walls, they shall not be connected to a sanitary sewer but shall be connected to a storm sewer or shall be discharged to a sump and then discharged either to a storm sewer or to a street gutter, or be free-discharged to the existing ground level at a point not less than ten feet from any exterior wall of any building.
  - (3) Storm water or any other clean unobjectionable waste shall not be drained or discharged into any sanitary sewer.
  - (4) In the event it is necessary to utilize a pump or pumps for the discharge of any sanitary waste to a sanitary sewer, any storm water or other unobjectionable wastes to be discharged from any premises shall be handled separately to a storm sewer, to a street gutter or to be free discharge ten feet distant from any building wall.
- (d) Connection with a cesspool or privy vault shall not be made into a sanitary, combined or storm water sewer.

- (e) An interceptor for the trapping of grease and oil shall be provided on a connection from a hotel, factory, grain mill and/or elevator, restaurant, club or institutional kitchen, commercial garage or automobile washing station, or other use as determined by the Director. Such trap shall meet the requirements of the Director.
- (f) A screen or other contrivance for the interception of objectionable solids shall be provided on a connection from a mill, canning factory or any other institution or building in which any business is conducted of such a nature as to create possible objectionable solids entering the sanitary sewer system. Such screen or contrivance shall be subject to the approval of the Director.
- (g) No person shall discharge into a house sewer or tap a house sewer for the purpose of discharging into it any waste or drainage water prohibited by the provisions of this section. Any existing connection in violation of the provisions of this section shall be abandoned and removed at the owner's expense.
- (h) Some means of measuring the flow of wastes satisfactory to the Director, shall be provided for the premises of any person, firm or corporation from which wastes are emptied into the sanitary sewer, where such wastes cannot be adequately measured without such means and/or where such means is deemed necessary by the Director. The failure to provide such means when required shall be deemed a violation of this section and shall be subject to the penalty in Section 925.09.
- (i) Permission to tap to the sanitary sewer system of the City shall be granted only subject to the condition that the person, firm or corporation to whom such permission is granted shall allow a representative of the City to enter upon the premises of such person, firm or corporation tapped to such sewer, at any and all reasonable times to collect representative samples of wastes being emptied into the sewer system. After such permission has been granted, failure or refusal to allow such entrance and collection of samples by such City representative shall be deemed a violation of this section and shall be subject to the penalty in Section 925.09.

## Section 7.02            **General Subdivision Design**

The development of the subdivision shall be based on an analysis of environmental characteristics of the site. To the maximum extent possible, development shall be located so as to preserve the natural features of the site, avoid areas of environmental sensitivity, and minimize negative impacts on and alteration of natural features. The following specific areas shall be preserved as undeveloped open space, to the extent consistent with reasonable utilization of the land, in accordance with other applicable state or local regulations:

- A.     Wetlands, as defined in Section 404, Federal Water Pollution Control Act Amendments of 1972, subject to field verification by the U.S. Army Corps of Engineers, or other agency authorized to make such determination;
- B.     Significant trees or wooded areas, defined as the largest known individual trees of each species in the state, large trees approaching the diameter of the known largest tree or species or groups of trees that are rare to the area or of particular horticultural or landscape value;
- C.     Lands subject to flooding, as specified in Section 7.03 below;
- D.     Slopes in excess of fifteen percent (15%) unless appropriate engineering methods are employed to address erosion, stability and residential safety;
- E.     Historically significant structures and/or sites, as listed on, or eligible for inclusion, on the National Register of Historic Places.

## Section 7.03

### Land Not Suited for Development

If the Planning and Zoning Commission finds that land proposed for subdivision development is unsuitable due to flooding, poor drainage, topography, inadequate public facilities, and/or other condition that may be detrimental to the general health, safety or welfare of the public, and if it is determined that the land should not be developed for the purpose proposed, the Commission shall not approve such subdivision unless adequate methods are proposed by the Owner/Developer for alleviating the problems that would be created by development of the land.

#### A. Land Subject to Flooding

The Planning and Zoning Commission shall not allow subdivision of land or lands subject to flooding unless the following requirements are met:

1. No subdivision or part thereof shall be approved if the proposed subdivision development will, individually or collectively, significantly increase flood flows, heights or damages.
2. No subdivision, or part thereof, shall be approved for floodway fringe areas which will substantially affect the storage capacity of the flood plain.
3. Building sites used or intended to be used for human occupation shall not be permitted in floodway areas. Sites for these uses may be permitted outside the floodway if the sites or structures are elevated to such height that the lowest floor of the structure is least one (1) foot above the 100-year base flood elevation, as established by the Federal Emergency Management Agency (FEMA), the Ohio Department of Natural Resources (ODNR), or other authorized agency, in a flood study or report approved by the Director of Public Service. Required fill areas must extend fifteen (15) feet beyond the limits of the structure(s).
4. When the Planning and Zoning Commission determines that only part of a proposed plat can be developed in compliance with these requirements, it shall limit development to only that portion, and shall require that the method of development is consistent with its determination.
5. The Planning and Zoning Commission may attach other reasonable conditions as is appropriate to the approval of plats within areas subject to flooding. Such conditions may include, but are not limited to, requirement for the construction of dikes, levees or other similar measures, or floodproofing of structures.

#### **Section 7.04**

#### **Erosion and Sedimentation Control**

Measures shall be taken by the Owner/Developer to minimize erosion and its impacts during subdivision construction activity. The Planning and Zoning Commission may require detailed erosion and sedimentation plans to be submitted if it determines that the size and/or scale of the proposed subdivision warrants such action. Generally, such a plan shall be required for major subdivisions comprising more than twenty (20) lots or more than fifteen (15) acres. Such plans shall indicate the techniques to be used to control erosion both during construction and permanently, and include a schedule for installing same. Erosion control plans shall be based on the control of erosion on-site, with the objective of eliminating or minimizing erosion and sedimentation impacts off-site. Techniques, devices and/or measures used shall be reviewed and approved by the Director of Public Service.

All erosion and sedimentation control devices shall be in place at the start of construction activity.

Section 7.05

Surface Runoff and Storm Drainage

A. Outlets

No subdivision shall be approved by the Planning and Zoning Commission unless there is an adequate outlet for stormwater as determined by the Director of Public Service. Generally it will be necessary to pipe storm water to an adequate watercourse, stream or existing storm system which has the capacity to accommodate the now, or to utilize acceptable on-site water retention methods adequate to minimize excessive off-site stormwater flows

B. Preservation of Natural Drainage Courses

No natural drainage course shall be altered and no fill, buildings or structures shall be located unless provision is made for the now of surface water, in a manner satisfactory to the Director of Public Service. An easement shall be provided on both sides of the existing surface drainage course adequate for the purpose of future widening, deepening, enclosing or otherwise improving said drainage course. If such drainage course crosses private property, easements must be obtained by the Owner/Developer for construction and future maintenance. These easements must be shown on the Construction Plans, including the volume and page number of the recorded easement.

C. Grades

All surface areas not covered by hard surface improvements or stone shall be seeded or sodded and sloped to drain according to the following:

1. Grass areas shall have a minimum slope or grade of eight-tenths of one percent (.8%).
2. Grass areas next to buildings shall slope away from the building at not less than five percent (5%) for a minimum of ten feet.
3. Ditches or swales in grassed areas with a bottom slope or grade between two percent and seven percent (2-7%) shall be sodded.
4. Ditches or swales with a bottom slope or grade greater than seven percent (7%) shall have a paved or stone gutter.

D. Submittal of Drainage Data

Information and data pertaining to water volumes and velocities for all watersheds entering and on the property, along with calculations to show that proposed drainage improvements will adequately address such flows, shall be submitted to the Director of Public Service, along with required Construction and Grading Plans. Storm drainage systems shall generally be designed so that the peak rate of stormwater runoff from the site after development does not exceed the peak rate of runoff before development; however, the Director of Public Service may grant administrative exceptions to this requirement when specific conditions warrant such action. The methods and techniques proposed to address surface runoff shall be designed to accommodate the two (2) year frequency storm

E. Culverts

All culverts utilized in subdivisions shall have the appropriate headwalls and other structures and improvements to protect the facility, as determined by the Director of Public Service.

Section 7.11                    **Public Sites and Open Space**

A.        **Required Dedication or Reservation**

Where a proposed park or school site, as shown on a land use plan adopted by City Council, is located in whole or in part within a proposed subdivision, the Planning and Zoning Commission may require the following:

1.    the dedication to the public of part or all of the proposed site and/or reservation of the site for a period of up to three (3) years to enable acquisition by the appropriate agency or entity.

B.        **Minimum Dedication Requirements**

The Owner/Developer shall be required to reserve a minimum of five percent (5%) of the total area of the land included in the proposed plat as permanent open space. The open space shall either be dedicated to a public agency which has expressed a desire to accept and maintain the open space or shall be transferred to a private association or entity. If the open space is transferred to a private association or entity, acceptable provisions for the perpetual maintenance of the open space shall be stated on the plat.

Land proposed for open space shall be suitable for recreational purposes. The Planning and Zoning Commission shall have the authority to determine whether or not the proposed open space and maintenance provisions are acceptable. Lands used for the purposes of utilities shall not be considered open space for the purposes of this Ordinance.

C.        **Fee in Lieu of Dedication**

Where the Planning and Zoning Commission determines that the dedication of open space as proposed by the Owner/Developer within the proposed subdivision is not desirable based on consistency with the Open Space Resources Plan of the City, the Owner/Developer shall be required to pay an amount equal to five percent (5%) of the total value of the land within the proposed subdivision, as shown on the current Pickaway County tax records, to the City of Circleville. This payment in lieu of dedication shall be placed in a separate fund to be used by the City only for the purposes of open space acquisition or improvement of public open space and recreational facilities for the benefit of the residents of the City of Circleville.

**APPENDIX B**

**OHIO EPA 205b STREAM ASSESSMENTS  
FOR SCIOTO RIVER (HUC 11)**

**Ohio EPA 2004 Integrated Report Appendix D.2  
Watershed Assessment Unit (WAU) Summaries**

**HUC11**                      **WAU Description**    **WAU Size (mi<sup>2</sup>): 187.2**  
 05060001 230              Scioto River (downstream Olentangy River to upstream Big Darby Creek);  
 excluding Scioto R. mainstem

**Integrated Report Assessment Category: 5**    **Priority Points: 1**  
**Next Scheduled Monitoring: 2011**

**Aquatic Life Use Assessment**

Subcategories of ALU:    WWH,LRW    Sampling Year(s):    1994, 1997, 2001  
 Impairment:    Yes

Stream Size Category	Raw Data		% Attainment			WAU Score		
	Data Available	No. Attaining	Full	Partial	Non	Full	Partial	Non
Small (Spatial)								
< 5 mi <sup>2</sup>	6 Sites	1 Sites						
5-20 mi <sup>2</sup>	4 Sites	1 Sites	20.8	12.5	66.7			
20-50 mi <sup>2</sup>	Sites	Sites				21	12	67
Large (Linear)								
50-500 mi <sup>2</sup>	Sites							
	Miles	Miles						

High Magnitude Causes

Flow Alteration  
 Other Habitat Alterations

High Magnitude Sources

Land Development/Suburbanization  
 Urban Runoff/Storm Sewers (NPS)

**Recreation Use Assessment**

Subcategory of Use: Primary Contact

Impairment: Unknown

No. Ambient Sites:

No. Ambient Sampling Records:

Geometric Mean:

75<sup>th</sup> %ile:

No. of NPDES MOR Sites:

No. of NPDES MOR Records:

90<sup>th</sup> %ile:

Other:

**Fish Consumption Advisory (FCA) Assessment**

Waters Within the WAU Sampled and Assessed:

FCA Issued:

(See the 2004 Ohio FCA for more detailed information at "[www.epa.state.oh.us/dsw/fishadvisory/index.html](http://www.epa.state.oh.us/dsw/fishadvisory/index.html)")

Impairment Due to FCA:

Pollutant (Waterbody):

**Comments**

Several urban streams in Columbus, Grove City and southern Franklin County were sampled between 1993 and 2001 in this assessment unit

**Ohio EPA 2004 Integrated Report Appendix D.2  
Watershed Assessment Unit (WAU) Summaries**

**HUC11**                      **WAU Description**                      **WAU Size (mi<sup>2</sup>): 162.4**  
 05060002 010              Scioto River (downstream Big Darby Cr. to upstream Kinnikinnick Cr.);  
 excluding Scioto R. mainstem

**Integrated Report Assessment Category: 5**                      **Priority Points: 5**  
**Next Scheduled Monitoring: 2011**

**Aquatic Life Use Assessment**

Subcategories of ALU: EWH,WWH,LRW                      Sampling Year(s): 1992, 1993, 1996,  
 Impairment: Yes                      1997

Stream Size Category	Raw Data		% Attainment			WAU Score		
	Data Available	No. Attaining	Full	Partial	Non	Full	Partial	Non
<b>Small (Spatial)</b>								
< 5 mi <sup>2</sup>	4 Sites	3 Sites						
5-20 mi <sup>2</sup>	7 Sites	4 Sites	63.1	30.7	6.2			
20-50 mi <sup>2</sup>	5 Sites	3 Sites				63	31	6
<b>Large (Linear)</b>								
50-500 mi <sup>2</sup>	Sites							
	Miles	Miles						

High Magnitude Causes

Unknown Toxicity  
 Priority Organics  
 Metals  
 Unionized Ammonia  
 Siltation  
 Organic Enrichment/DO  
 Other Habitat Alterations

High Magnitude Sources

Major Industrial Point Source  
 Municipal Point Sources  
 Package Plants (Small Flows)  
 Nonirrigated Crop Production  
 Onsite Wastewater Systems (Septic Tanks)  
 Channelization- Ag  
 Channelization- Development  
 Streambank Destabilization- Ag

**Recreation Use Assessment**

Subcategory of Use: Primary Contact  
 Impairment: Unknown  
 No. Ambient Sites:                      No. Ambient Sampling Records:  
 No. of NPDES MOR Sites:              No. of NPDES MOR Records:  
 Other:

Geometric Mean:  
 75<sup>th</sup> %ile:  
 90<sup>th</sup> %ile:

**Fish Consumption Advisory (FCA) Assessment**

Waters Within the WAU Sampled and Assessed:

FCA Issued:

(See the 2004 Ohio FCA for more detailed information at "[www.epa.state.oh.us/dsw/fishadvisory/index.html](http://www.epa.state.oh.us/dsw/fishadvisory/index.html)")

Impairment Due to FCA:                      Pollutant (Waterbody):

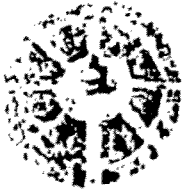
**Comments**

**APPENDIX C**

**STORM WATER MANAGEMENT PLAN SCHEDULE**



**APPENDIX D**  
**COMPLAINT FORM**



**City of Circleville**  
104 East Franklin Street  
Circleville, Ohio 43113  
(740) 477-2551

Complaint Number:	
Date Complaint Received:	Complaint Taken By:
Complainant:	
Complainant's Address:	Phone Number:
Location of Complaint:	
Summary of Complaint:	

**Referred Complaint To:**

- |   |   |   |                                       |
|---|---|---|---------------------------------------|
| <input type="checkbox"/> Mayor                | <input type="checkbox"/> Safety Director  | <input type="checkbox"/> Police           | <input type="checkbox"/> Fire         |
| <input type="checkbox"/> EMT                  | <input type="checkbox"/> Zoning           | <input type="checkbox"/> Service Director | <input type="checkbox"/> Street Supt. |
| <input type="checkbox"/> Utilities            | <input type="checkbox"/> Health Dept.     | <input type="checkbox"/> Building Dept.   | <input type="checkbox"/> Law Director |
| <input type="checkbox"/> City Council Member: |   |   |                                       |
| <input type="checkbox"/> Tree List            | <input type="checkbox"/> Other – Explain: |   |                                       |

Disposition of Complaint:	
Date of Disposition:	Official:

Please return a copy of the complaint to the Mayor's office after disposition.

**Circleville City Council**

City Hall, 127 S. Court Street  
Circleville, Ohio, 43113  
Telephone (740) 477-2551  
Fax (740) 477-8247

David M. Crawford, President  
J. Bruce Bell, At Large  
Robert Bensonhaver, At Large  
David Martin, At Large  
Thomas A. Klitzka, First Ward  
Barry Keller, Second Ward  
Anne Bella Canan, Third Ward  
William Bangert, Fourth Ward

Clerk  
Linda M. Chancey  
740-474-9362

**CERTIFICATION**


I, Linda M. Chancey, Clerk of the Council of the City of Circleville, Ohio,  
hereby certify that the forgoing is a true and correct copy of

- **Ordinance /Resolution#** 04-15- **2007**
- Passed by Council on 04-03- 2007

To the extent pertinent to the above titled

Ordinance and that the copy of such Ordinance attached hereto is a true copy  
thereof, and the same has not as of this date amended or repealed.

This 12<sup>th</sup> day of April, 2007

  
Clerk of Council

# RECORD OF ORDINANCES

Dayton Legal Blank, Inc.

Form No. 3342

Ordinance No. 24-15-2007

Passed 04-3-2007

**AN ORDINANCE AUTHORIZING THE DIRECTOR OF PUBLIC SERVICE TO FILE A NOTICE OF INTENT TO DISCHARGE STORM WATER TO THE RECEIVING SURFACE WATERS OF THE STATE OF OHIO AND ADOPTING A STORM WATER MANAGEMENT PLAN FOR SUBMISSION TO THE OHIO ENVIRONMENTAL PROTECTION AGENCY.**

WHEREAS, 40 CFR Part 122 and Section 6111 of the Ohio Revised Code require all urbanized areas in the state to develop, implement and enforce a storm water management program to "effectively" prohibit non-storm water discharges into storm sewers, reduce the discharge of pollutants to the maximum extent practicable, to protect water quality, and to satisfy the appropriate requirements of the Clean Water Act (CWA) in accordance with the Ohio Environmental Protection Agency (Ohio EPA's) Phase II program; and

WHEREAS, the Federal Water Pollution Control Act, as amended (USC 1251 et. seq.) and the Ohio Water Pollution Control Act (ORC Chapter 6111) require Small Municipal Separate Storm Sewer Systems (MS4s) to submit a Notice of Intent (NOI) and a Storm Water Management Program to the Ohio Environmental Protection Agency; and

WHEREAS, the City of Circleville meets the definition of a MS4 and, as such, is required to submit its NOI and its Storm Water Management Program to the Ohio Environmental Protection Agency; and

WHEREAS, the City of Circleville has developed a Storm Water Management Program designed to address Best Management Practices to mitigate the impact of storm water discharges to the Scioto River, and

WHEREAS, Section 925.07 of the City's Codified Ordinances provides for control of the quality of separate storm water discharged to the City's storm sewer system;

NOW, THEREFORE, BE IT ORDAINED BY THE COUNCIL OF THE CITY OF CIRCLEVILLE, COUNTY OF PICKAWAY, STATE OF OHIO, AS FOLLOWS:

SECTION I. That the Circleville City Council hereby endorses and supports the Storm Water Management Program as developed by the Director of Public Service.

SECTION II. That the Director of Public Service is hereby authorized to submit the NOI and the Storm Water Management Program to the Ohio Environmental Protection Agency.

SECTION III. That this ordinance shall take effect from and after the earliest period allowed by law.

PASSED:

4-3-2007  
DATE

*Dan M. Goad*  
PRESIDENT OF COUNCIL

ATTEST:

*Lucinda M. Orwig*  
CLERK OF COUNCIL

APPROVED:

4-3-2007  
DATE

*Jean R. Droste*  
MAYOR

APPROVED AS TO FORM:

*Gary D. Kenworthy*  
GARY D. KENWORTHY  
CITY LAW DIRECTOR

REVIEWED: \_\_\_\_\_  
FOR: \_\_\_\_\_