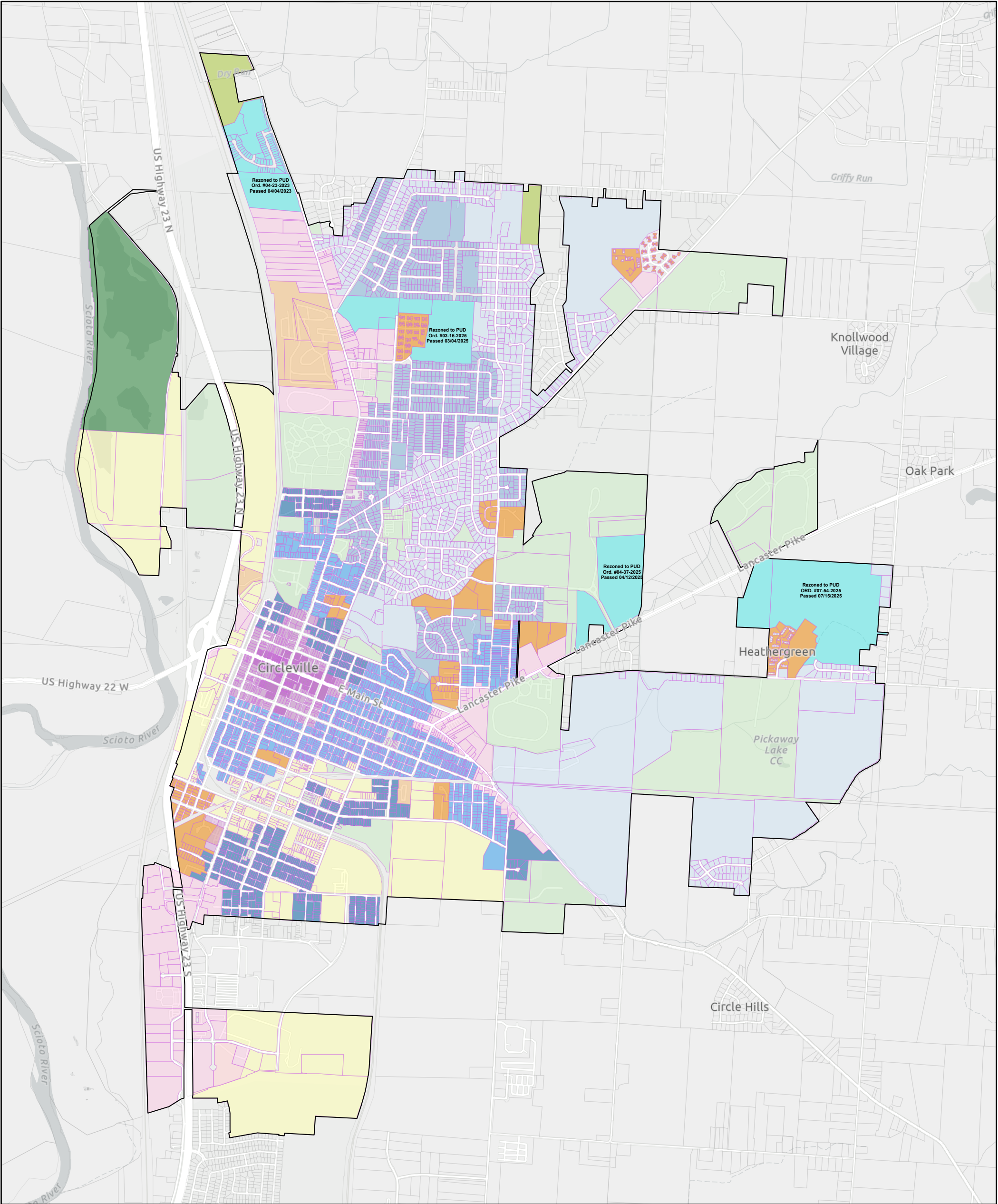


City of Circleville Official Zoning Map



7/24/2025

CORP BOUNDARIES

Circleville Zoning Districts

- AG (Agricultural)
- AGH (Agricultural w/ Hunting Overlay)
- LDR (Low Density Residential District)
- MDR (Medium Density Residential)
- HSU (Historic Single Unit Residential)
- TUR (Twin Unit Residential)
- MUR (Multi-Unit Residential)

- MHR (Manufactured Home Residential)
- GB (General Business)
- DB (Downtown Business)
- DBHD (Downtown Business w/ Historic District Overlay)
- NB (Neighborhood Business)
- IE (Innovation & Employment)
- CS (Community Service)
- PUD (Planned Unit Deveopment)
- N/A (not in city limits)

1:31,831

0 0.28 0.55 1.1 mi

0 0.45 0.9 1.8 km

Sources: Esri, TomTom, Garmin, FAO, NOAA, USGS, (c) OpenStreetMap contributors, and the GIS User Community, Sources: Esri, TomTom, Garmin, (c) OpenStreetMap contributors, and the GIS User Community

Amended 07/15/2025
Planner: Hannah Wynne | Zoning Inspector: Tyler Cobb